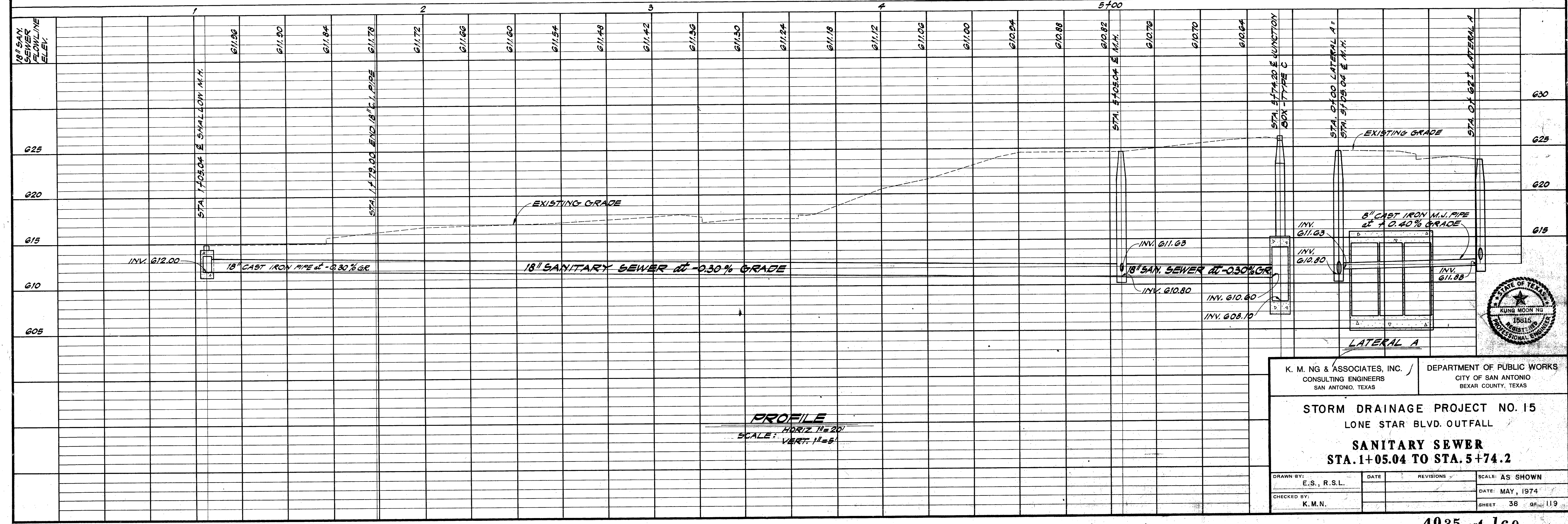


AS BUILT
DATE: AUGUST 1, 1981



K. M. NG & ASSOCIATES, INC.
CONSULTING ENGINEERS
SAN ANTONIO, TEXAS

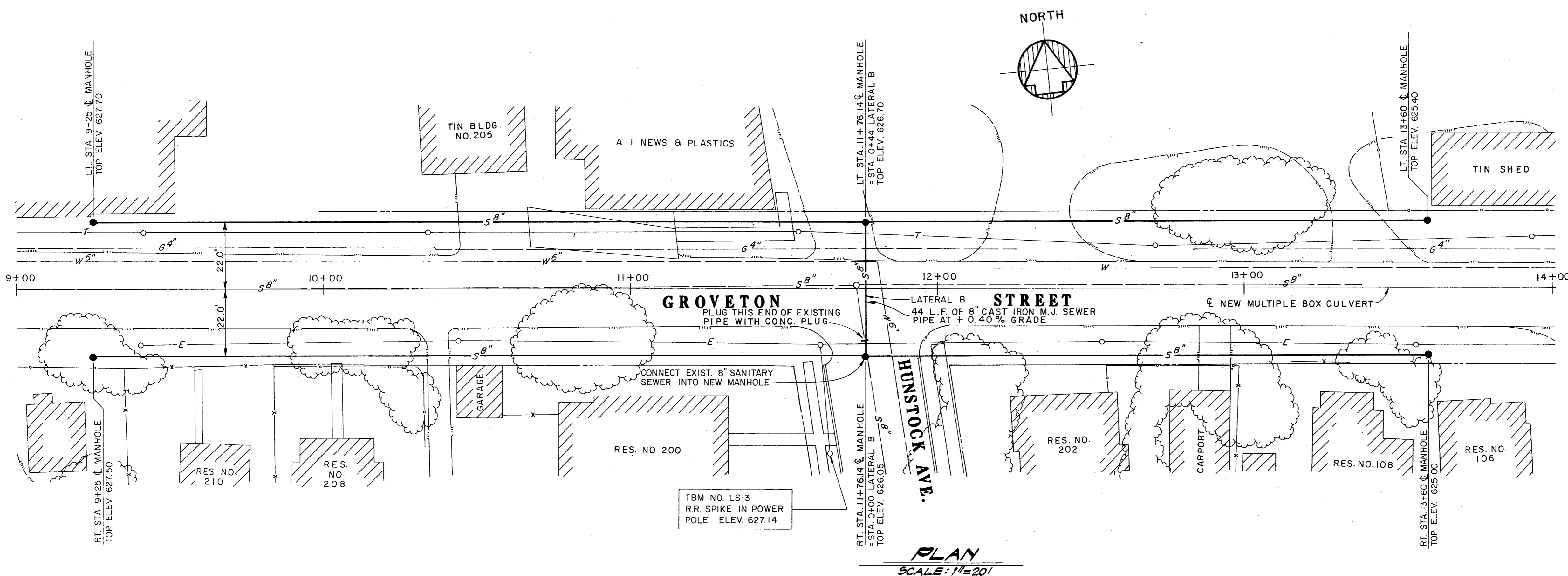
DEPARTMENT OF PUBLIC WORKS
CITY OF SAN ANTONIO
BEXAR COUNTY, TEXAS

STORM DRAINAGE PROJECT NO. 15
LONE STAR BLVD. OUTFALL

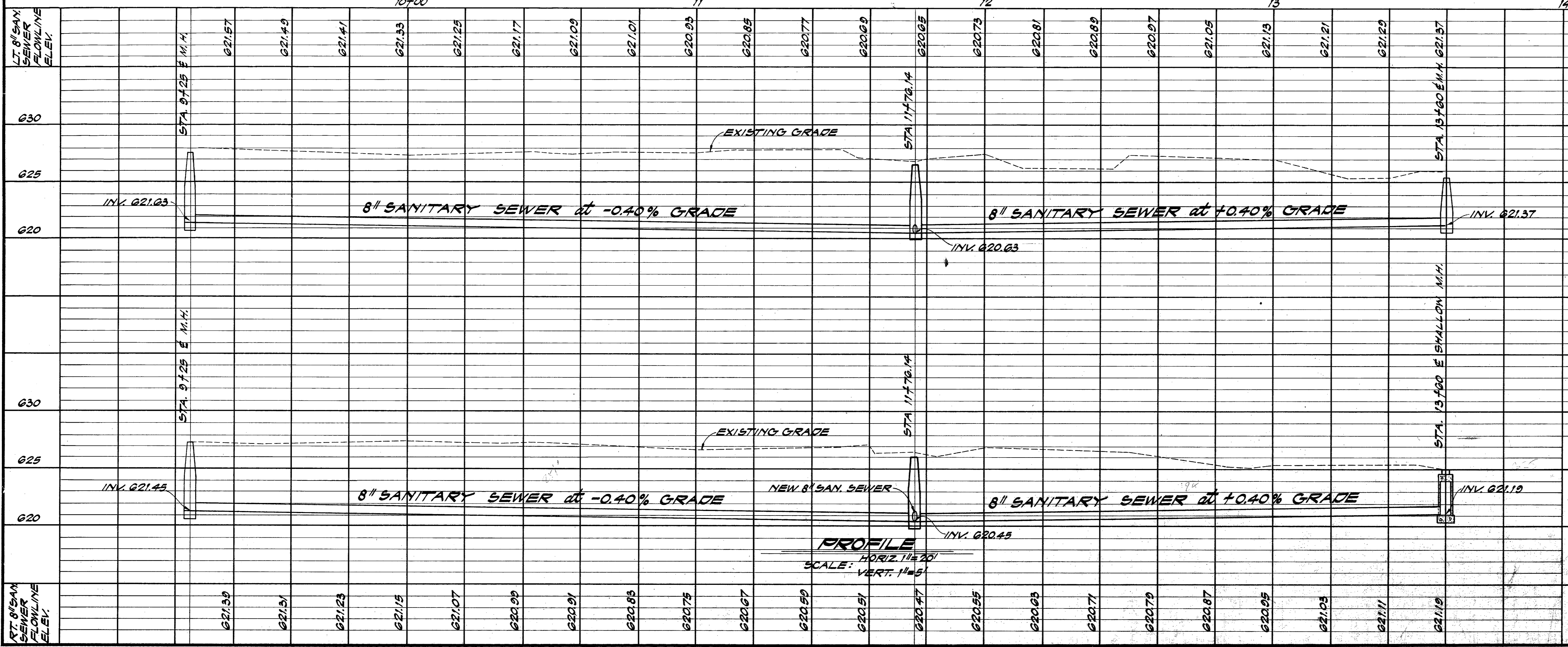
SANITARY SEWER
STA. 1+05.04 TO STA. 5+74.2

STATE OF TEXAS
KUNG MOON NG
15815
REGISTERED PROFESSIONAL ENGINEER

DRAWN BY: E.S., R.S.L.	DATE:	REVISIONS:	SCALE: AS SHOWN
CHECKED BY: K.M.N.	DATE: MAY, 1974		SHEET 38 OF 119



AS BUILT
DATE: AUGUST 1, 1981



K. M. NG & ASSOCIATES, INC.
CONSULTING ENGINEERS
SAN ANTONIO, TEXAS

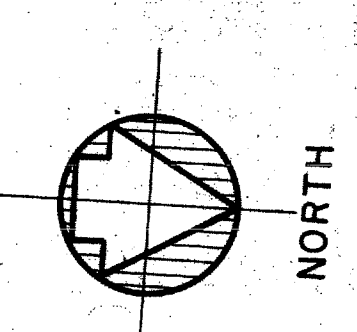
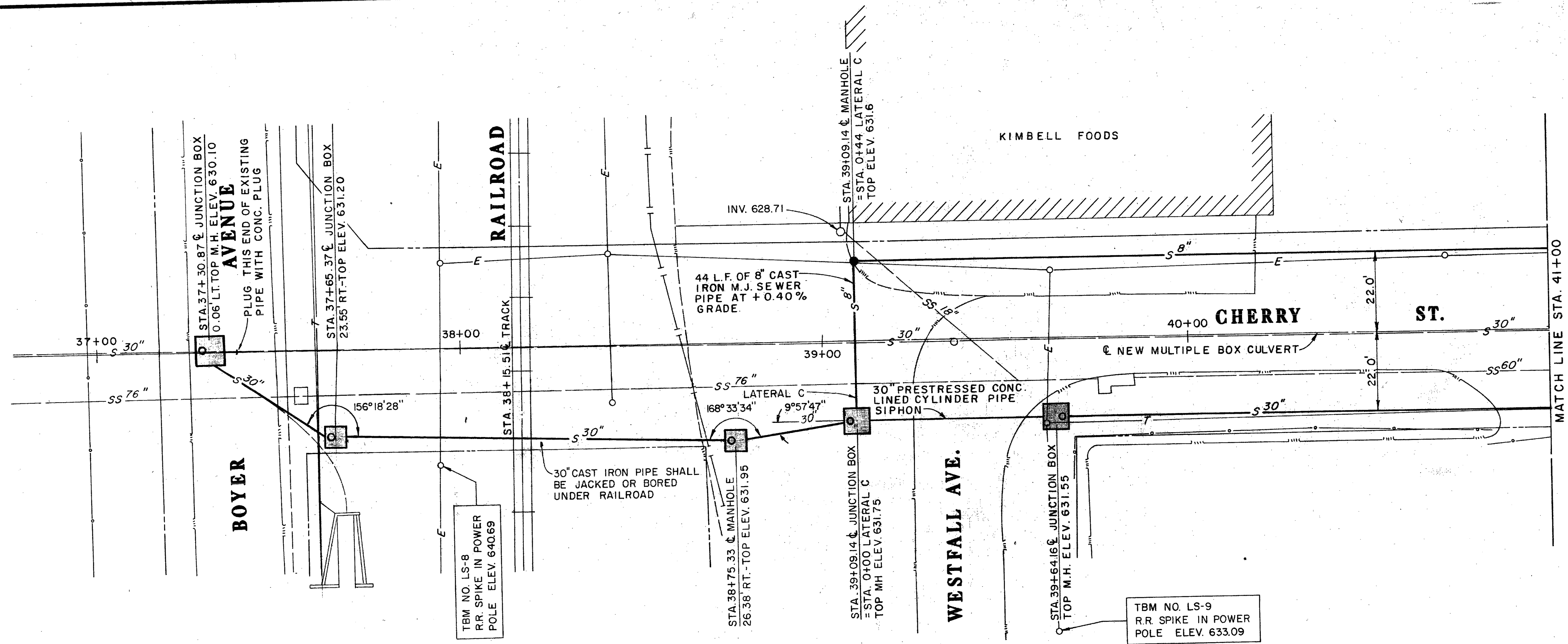
DEPARTMENT OF PUBLIC WORKS
CITY OF SAN ANTONIO
BEXAR COUNTY, TEXAS

STORM DRAINAGE PROJECT NO. 15
LONE STAR BLVD. OUTFALL

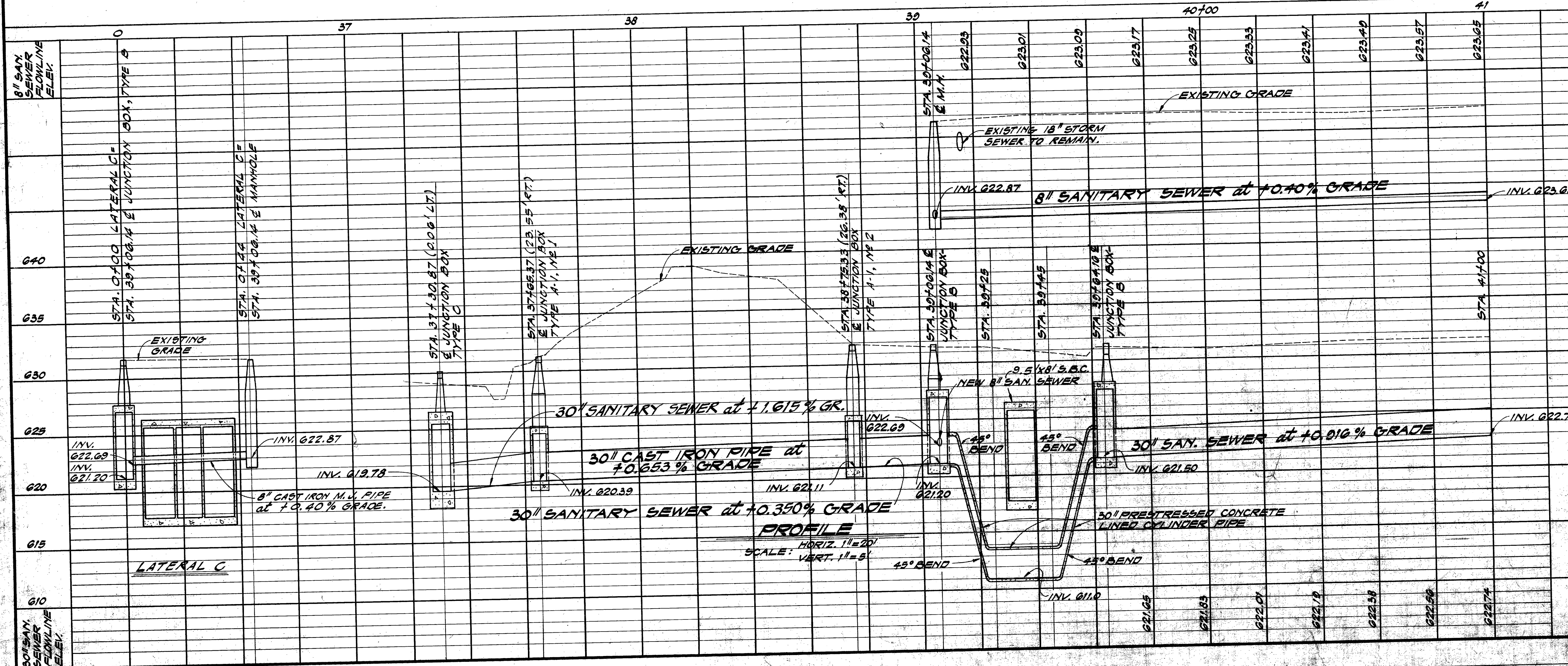
SANITARY SEWER
STA. 9+25 TO STA. 13+60

DRAWN BY: E. S., R.S.L.	DATE	REVISIONS	SCALE: AS SHOWN
CHECKED BY: K. M. N.			DATE: MAY, 1974
			SHEET 39 OF 119



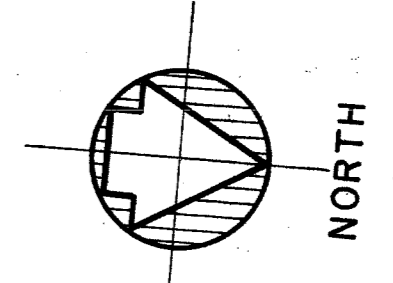
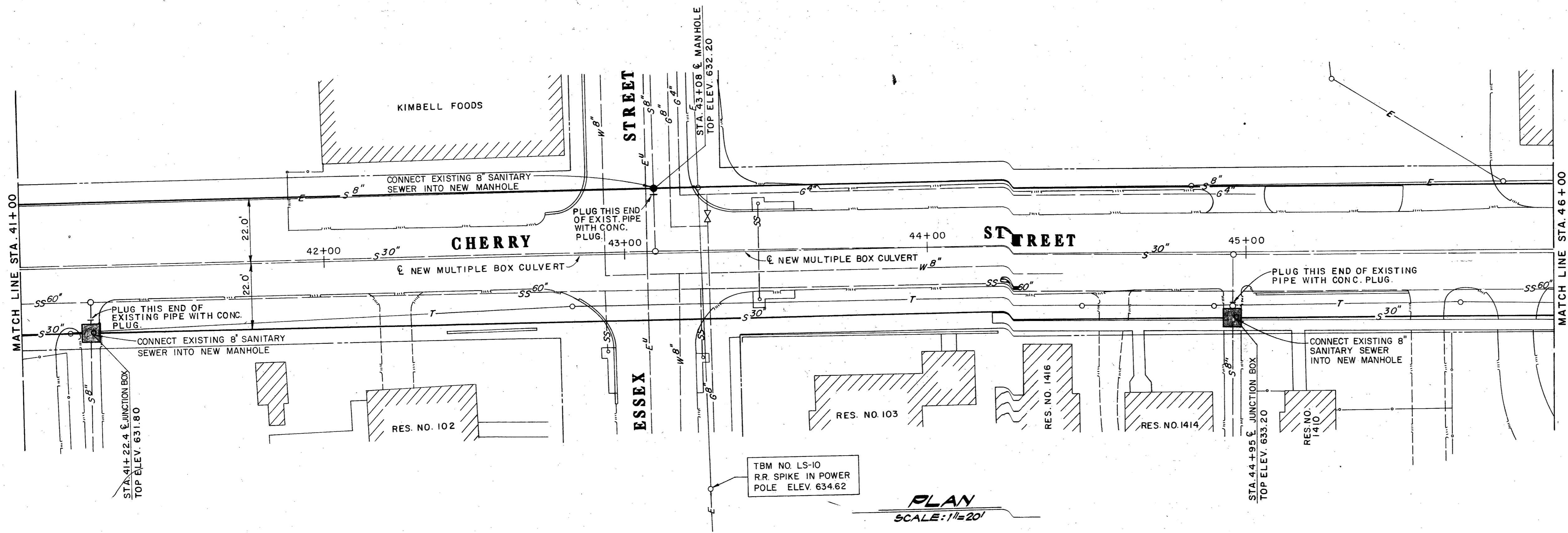


AS BUILT
DATE: AUGUST 1, 1981

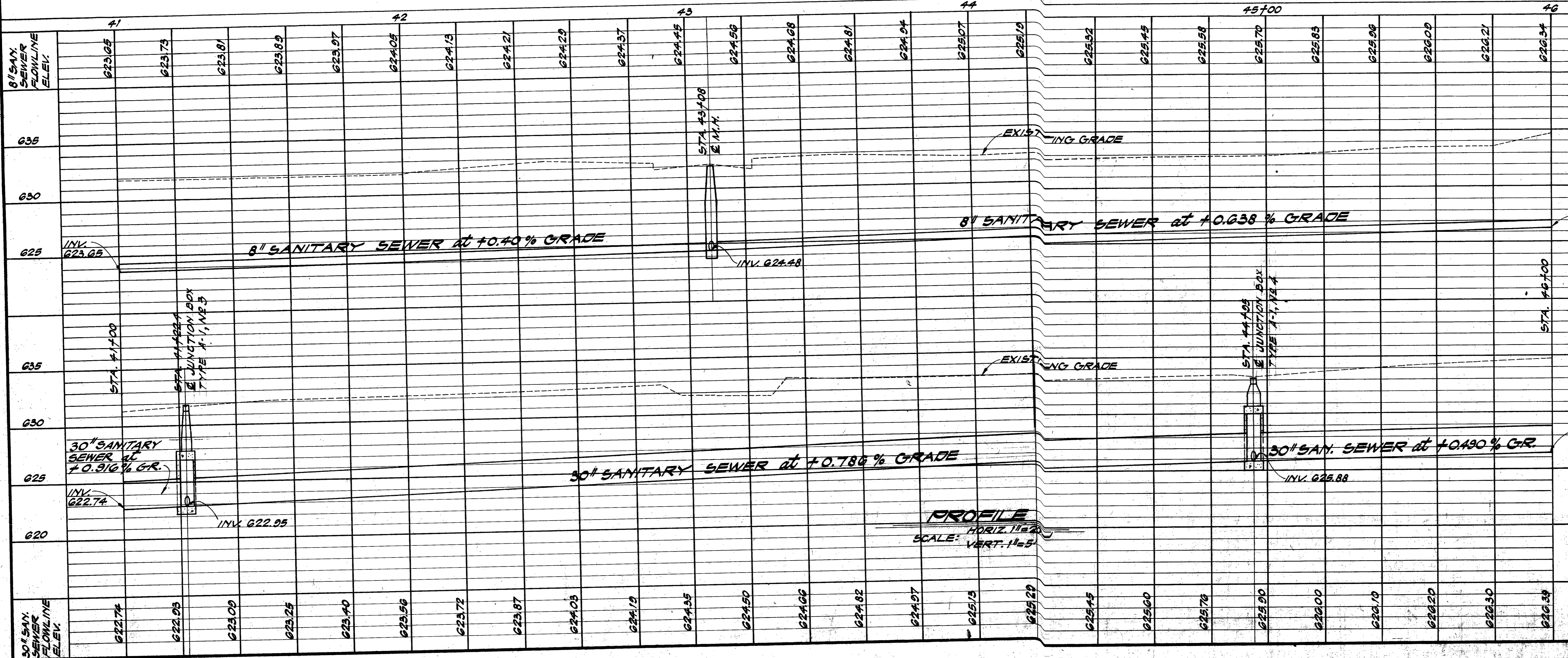


K. M. NG & ASSOCIATES, INC. CONSULTING ENGINEERS SAN ANTONIO, TEXAS		DEPARTMENT OF PUBLIC WORKS CITY OF SAN ANTONIO BEXAR COUNTY, TEXAS	
STORM DRAINAGE PROJECT NO. 15			
LONE STAR BLVD. OUTFALL			
SANITARY SEWER			
STA. 37+22.4 TO STA. 41+00			
DRAWN BY: E. S. R. S. L.	DATE: 5-16-76	REVISIONS: ADD J.B. A1	SCALE: AS SHOWN
CHECKED BY: K. M. N.	DATE: 10-2-78	REVISIONS: CORRECTION & GEN. REV.	DATE: MAY, 1974
SHEET NO. 40 OF 115			4035 160

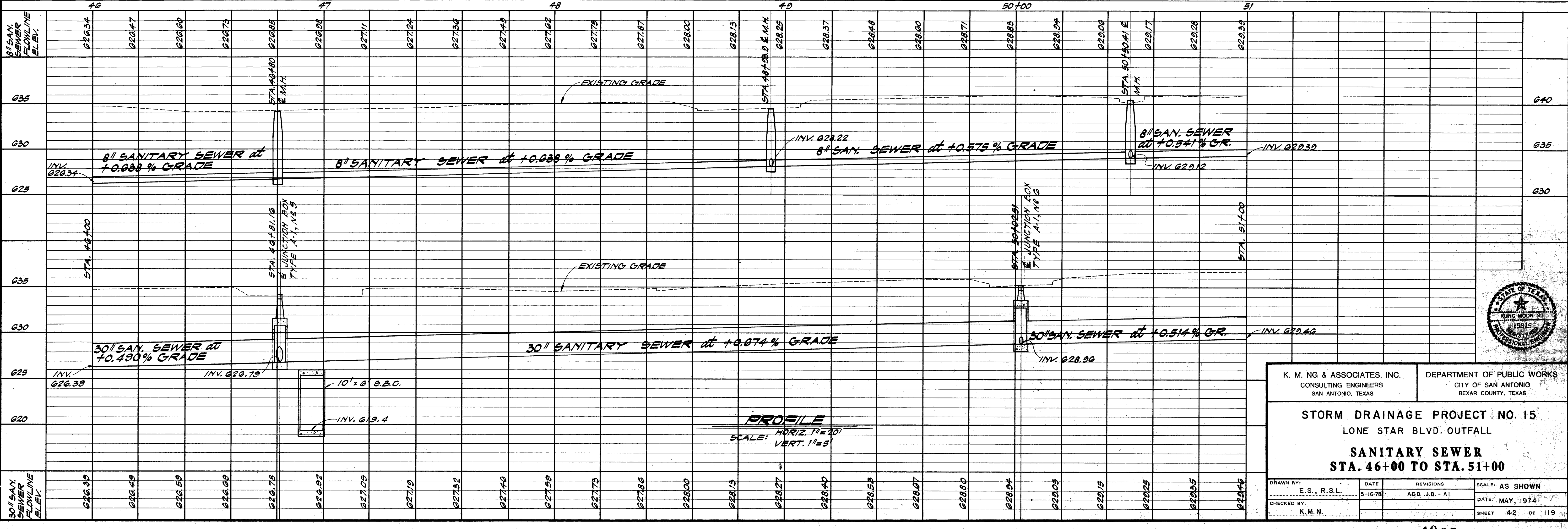
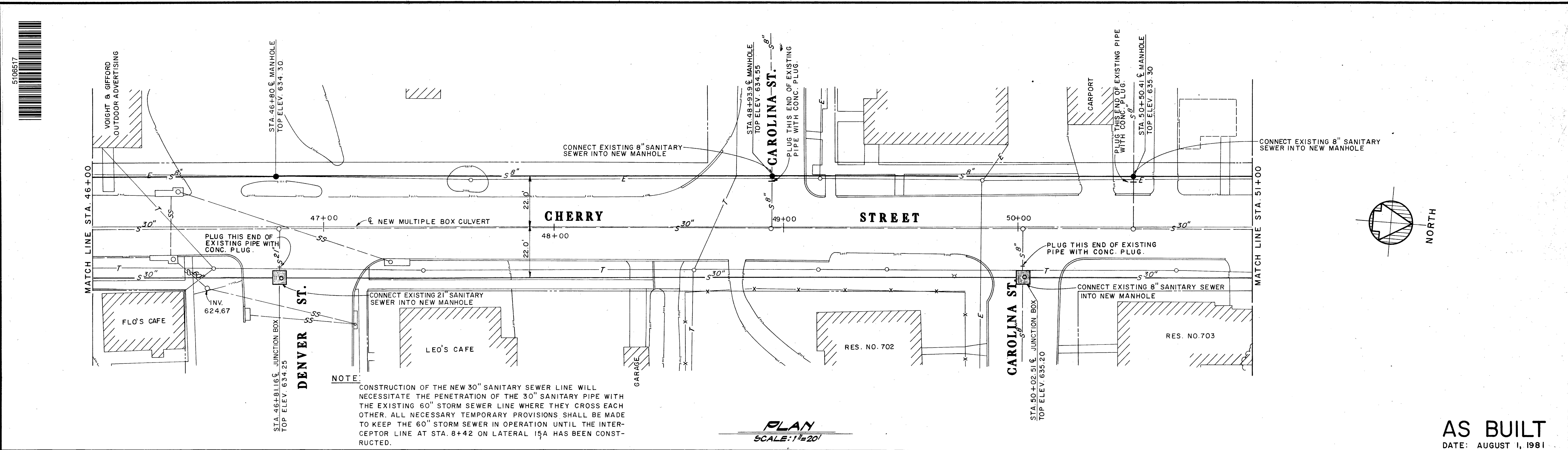




AS BUILT
DATE: AUGUST 1, 1981



K. M. NG & ASSOCIATES, INC. CONSULTING ENGINEERS SAN ANTONIO, TEXAS		DEPARTMENT OF PUBLIC WORKS CITY OF SAN ANTONIO BEXAR COUNTY, TEXAS	
STORM DRAINAGE PROJECT NO. 15			
LONE STAR BLVD. OUTFALL			
SANITARY SEWER			
STA. 41+00 TO STA. 46+00			
DRAWN BY: E.S., R.S.L.	DATE 5-16-78	REVISIONS ADD J.B. - AI	SCALE: AS SHOWN
CHECKED BY: K.M.N.		DATE: MAY, 1974	SHEET 41 OF 119



AS BUILT
DATE: AUGUST 1, 1981



K. M. NG & ASSOCIATES, INC.
CONSULTING ENGINEERS
SAN ANTONIO, TEXAS

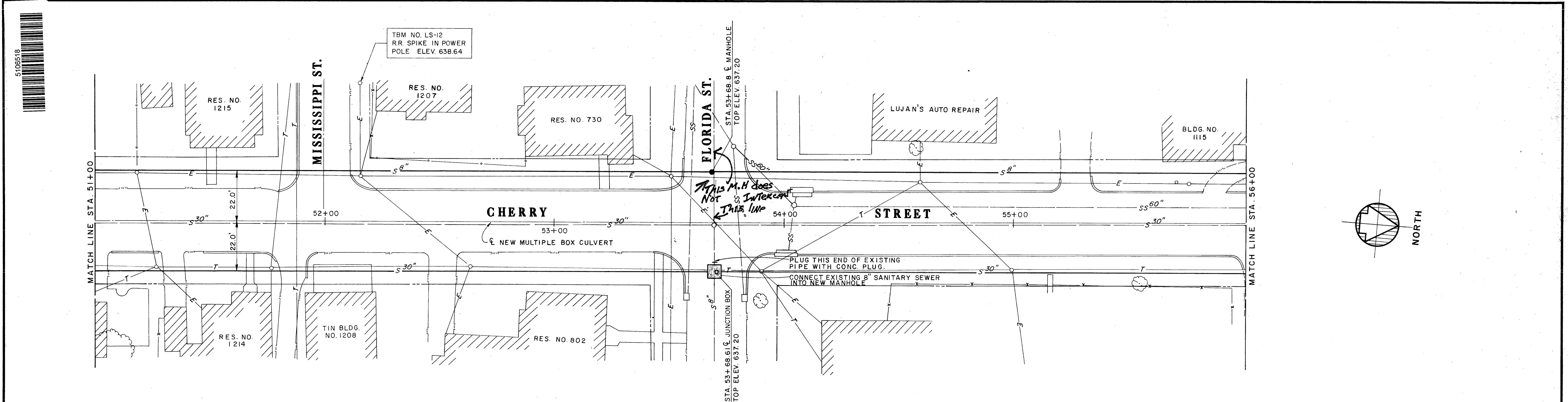
DEPARTMENT OF PUBLIC WORKS
CITY OF SAN ANTONIO
BEXAR COUNTY, TEXAS

STORM DRAINAGE PROJECT NO. 15
LONE STAR BLVD. OUTFALL

SANITARY SEWER
STA. 46+00 TO STA. 51+00

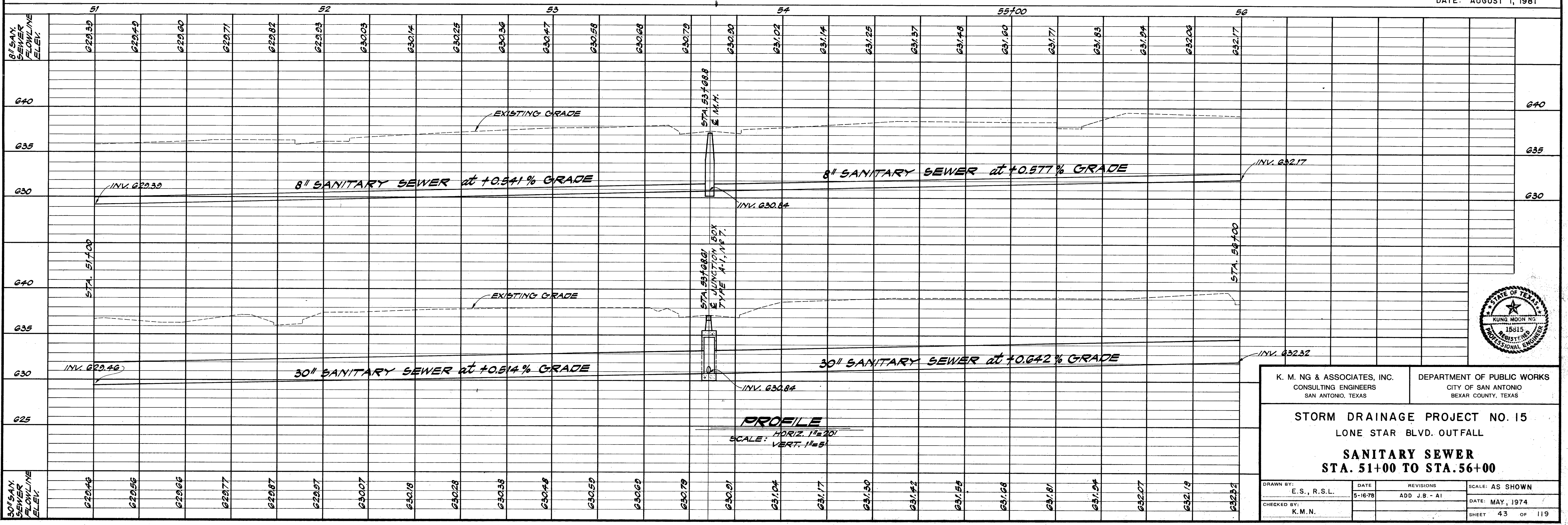
DRAWN BY: E.S. R.S.L.	DATE: 5-16-78	REVISIONS: ADD J.B. - A1	SCALE: AS SHOWN
CHECKED BY: K.M.N.			DATE: MAY, 1974

SHEET 42 OF 119



PLAN
SCALE: 1"=20'

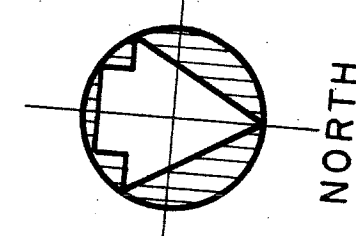
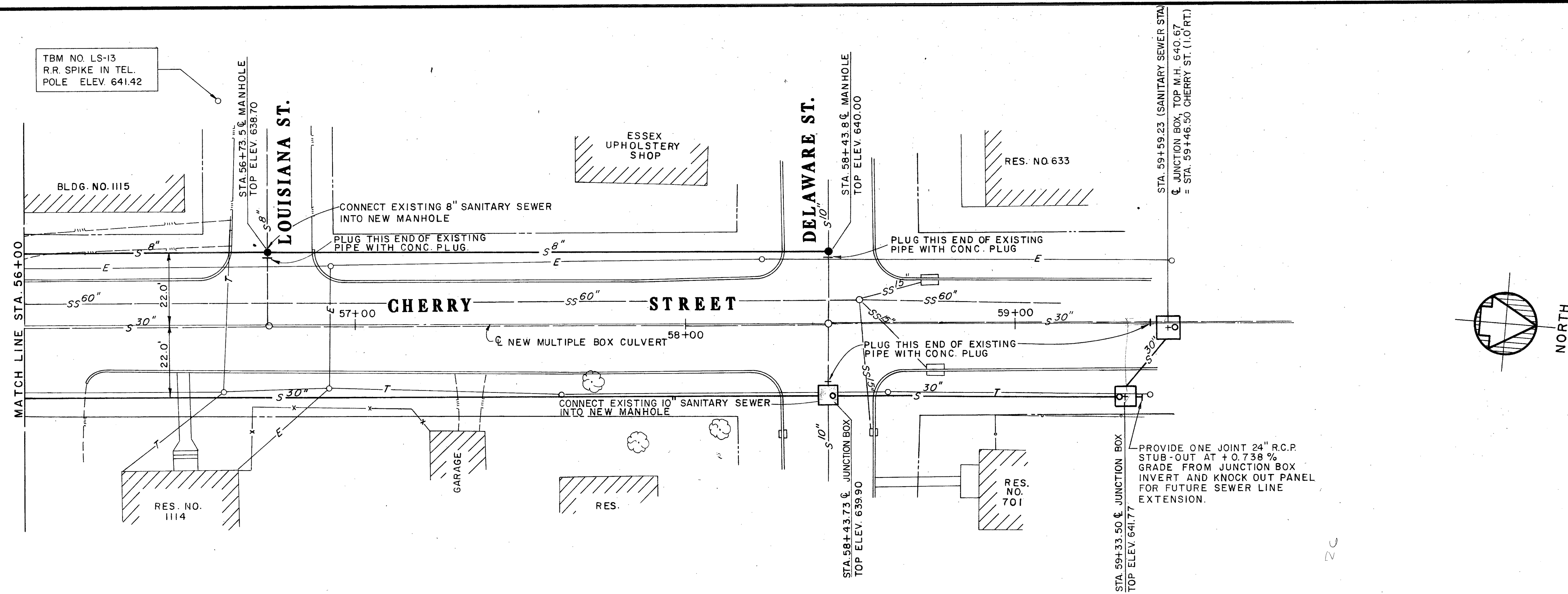
AS BUILT
DATE: AUGUST 1, 1981



PROFILE
HORIZ. 1"=20'
SCALE: VERT. 1"=5'

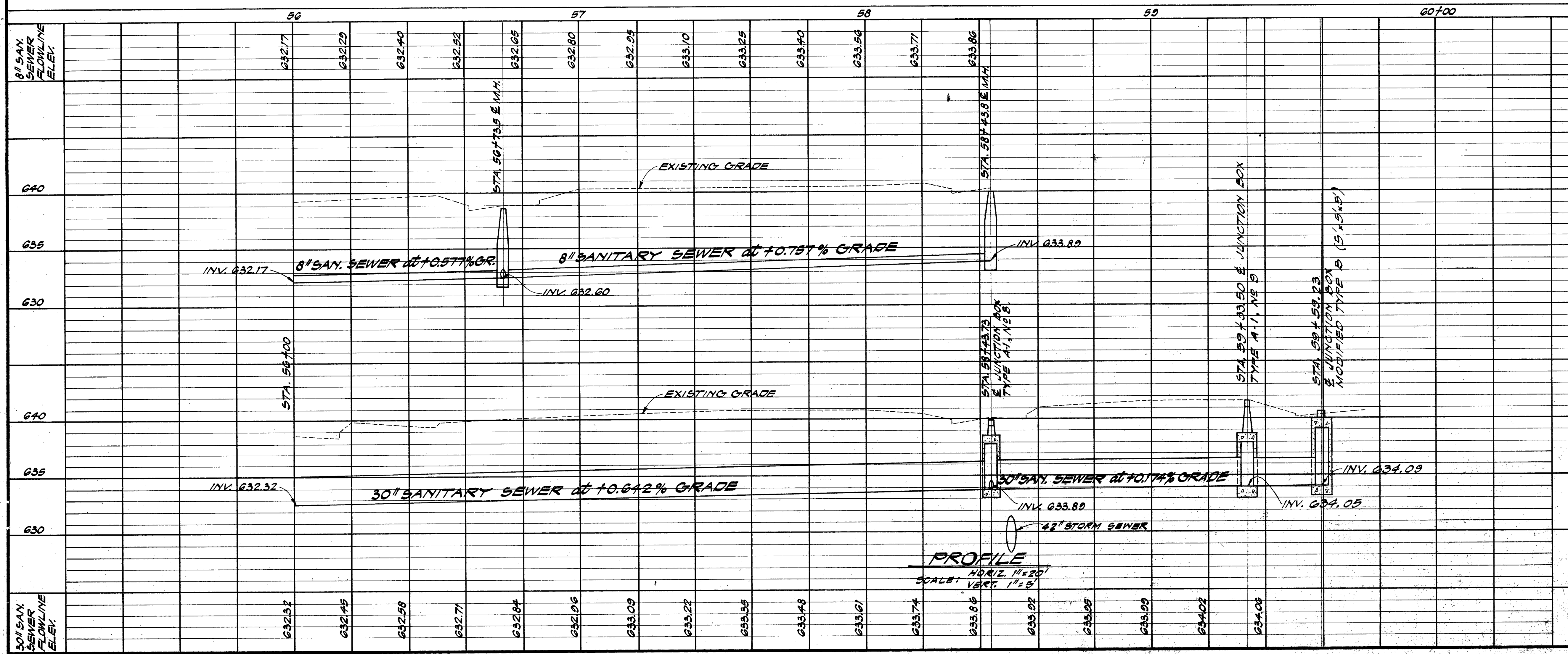


K. M. NG & ASSOCIATES, INC. CONSULTING ENGINEERS SAN ANTONIO, TEXAS		DEPARTMENT OF PUBLIC WORKS CITY OF SAN ANTONIO BEXAR COUNTY, TEXAS	
STORM DRAINAGE PROJECT NO. 15 LONE STAR BLVD. OUTFALL			
SANITARY SEWER STA. 51+00 TO STA. 56+00			
DRAWN BY: E. S., R.S.L.	DATE 5-16-78	REVISIONS ADD J.B. - AI	SCALE: AS SHOWN
CHECKED BY: K.M.N.			DATE: MAY, 1974
			SHEET 43 OF 119



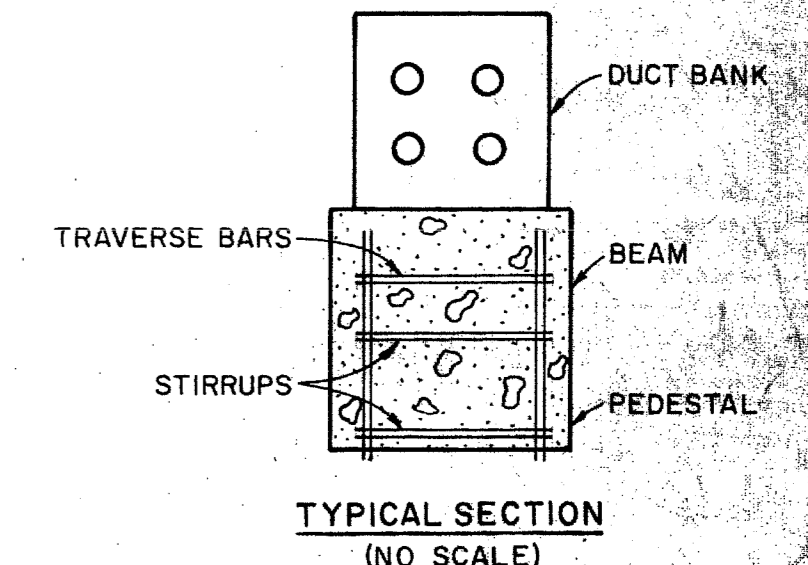
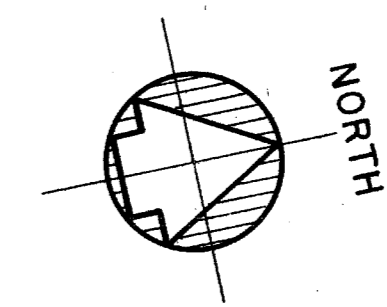
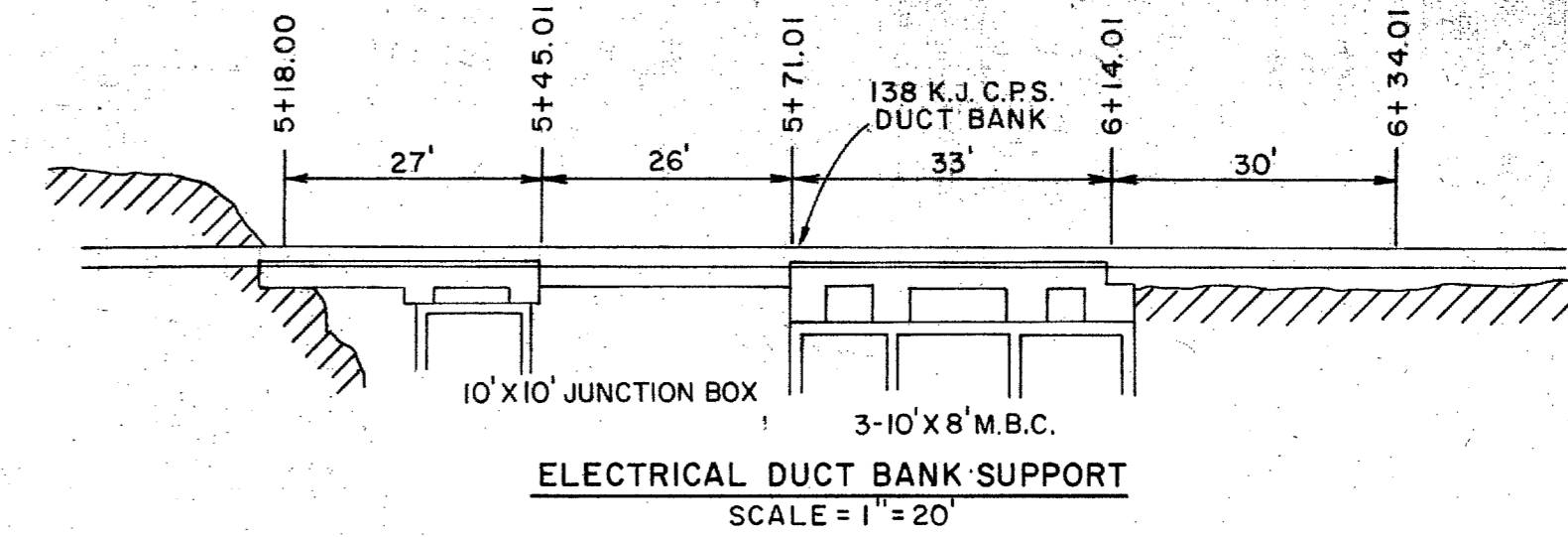
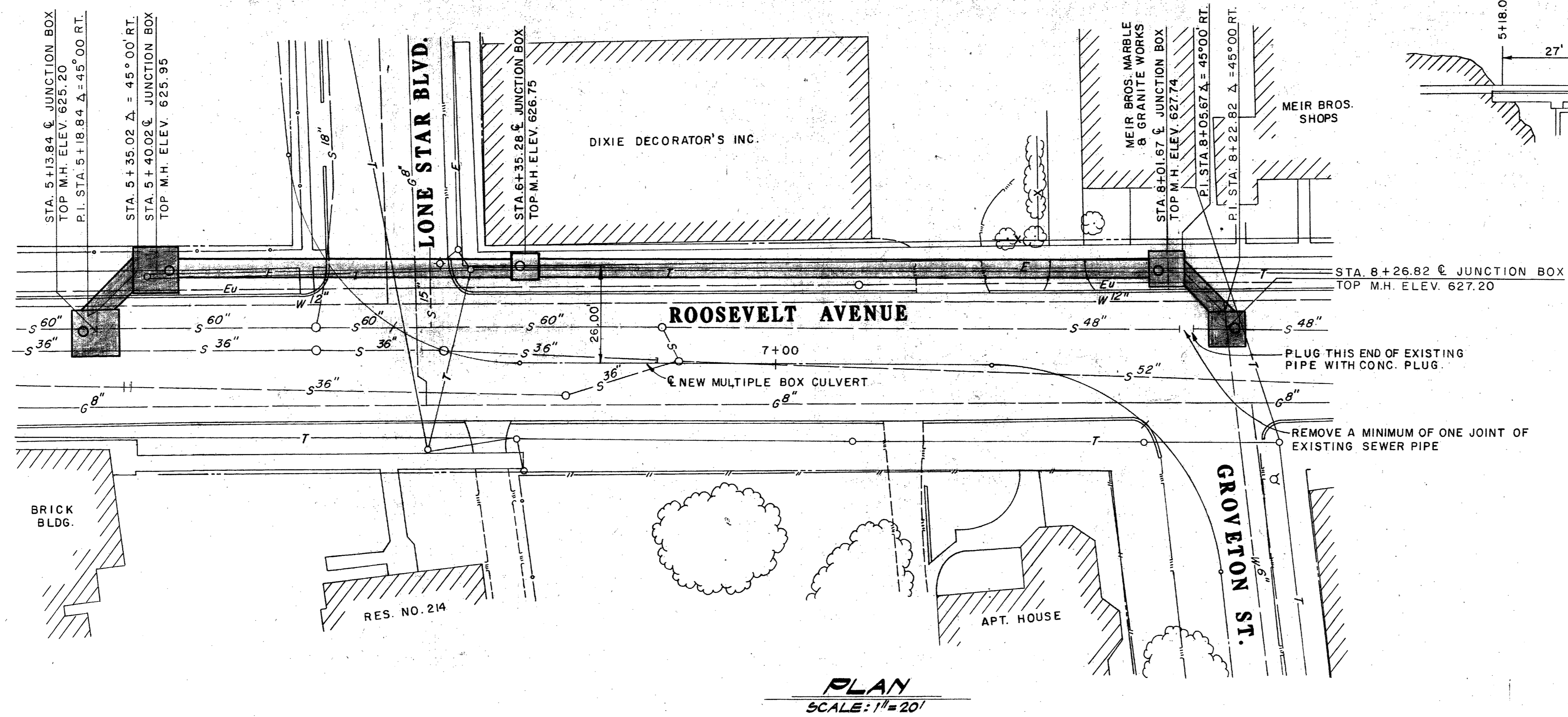
PLAN
SCALE: 1"=20'

AS BUILT
DATE: AUGUST 1, 1981



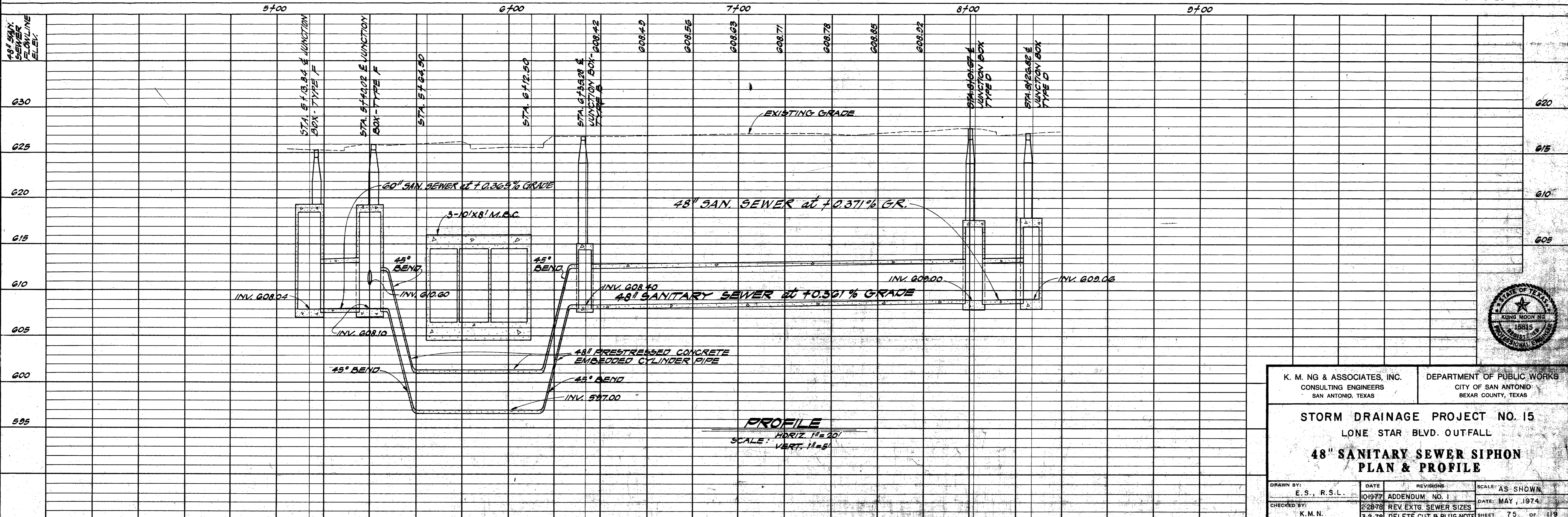
K. M. NG & ASSOCIATES, INC. CONSULTING ENGINEERS SAN ANTONIO, TEXAS		DEPARTMENT OF PUBLIC WORKS CITY OF SAN ANTONIO BEXAR COUNTY, TEXAS	
STORM DRAINAGE PROJECT NO. 15 LONE STAR BLVD. OUTFALL			
SANITARY SEWER STA. 56+00 TO STA. 59+64.1			
DRAWN BY: E.S., R.S.L.	DATE: 5-16-78	REVISIONS: ADD J.B. - A-1	SCALE: AS SHOWN
CHECKED BY: K.M.N.	DATE: 5-8-79	RELOCATE TYPE "B" J.B.	DATE: MAY, 1974
	DATE: 8-10-79	RELOCATE TYPES "B" & "A" J.B.	SHEET 44 OF 119

5121831

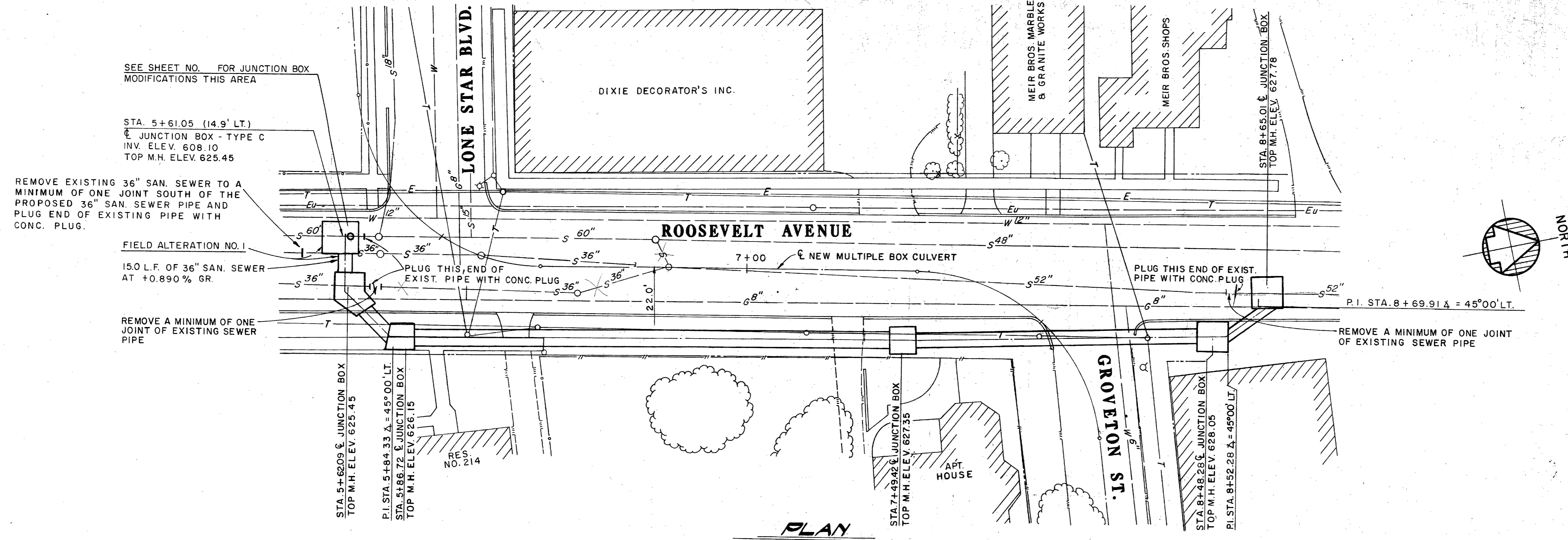


AS BUILT
DATE: AUGUST 1, 1981

1-2-79 SHIFT 48" SAN. SEWER LINE 1 FOOT TO THE WEST
8-28-78 ADDED TYPE D & F JUNCTION BOXES



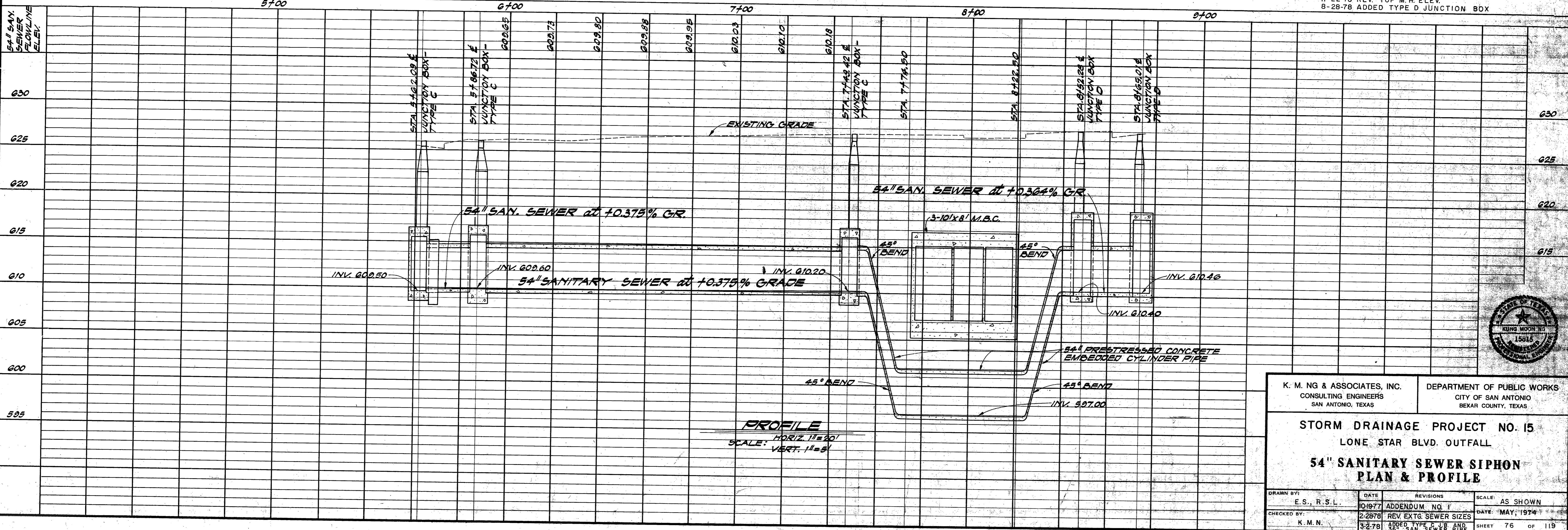
K. M. NG & ASSOCIATES, INC. CONSULTING ENGINEERS SAN ANTONIO, TEXAS		DEPARTMENT OF PUBLIC WORKS CITY OF SAN ANTONIO BEXAR COUNTY, TEXAS	
STORM DRAINAGE PROJECT NO. 15 LONE STAR BLVD. OUTFALL			
48" SANITARY SEWER SIPHON PLAN & PROFILE			
DRAWN BY: E. S. R. S. L.	DATE: 01977	REVISIONS: ADDENDUM NO. 1	SCALE: AS SHOWN
CHECKED BY: K. M. N.	DATE: 2-28-78	REVISIONS: REV. EXTG. SEWER SIZES	DATE: MAY, 1974
		3-2-78 DELETE CUT & PLUG NOTE	SHEET 75 OF 119



PLAN
SCALE: 1"=20'

AS BUILT
DATE: AUGUST 1, 1981

11-22-78 REV. TOP M.H. ELEV.
8-28-78 ADDED TYPE D JUNCTION BOX



PROFILE
SCALE: HORIZ. 1"=20'
VERT. 1"=5'



K. M. NG & ASSOCIATES, INC. CONSULTING ENGINEERS SAN ANTONIO, TEXAS		DEPARTMENT OF PUBLIC WORKS CITY OF SAN ANTONIO BEKAR COUNTY, TEXAS	
STORM DRAINAGE PROJECT NO. 15 LONE STAR BLVD. OUTFALL			
54" SANITARY SEWER SIPHON PLAN & PROFILE			
DRAWN BY: E. S., R.S.L.	DATE: 01-19-77	REVISIONS: ADDENDUM NO. 1	SCALE: AS SHOWN
CHECKED BY: K. M. N.	DATE: 2-28-78	REV. EXTG. SEWER SIZES	DATE: MAY, 1974
		3-2-78 30" & 36" SAN. SEWER AND	SHEET 76 OF 119